

**Anti-CSP Antibody**  
**Rabbit polyclonal antibody to CSP**  
**Catalog # AP59876****Specification**

---

**Anti-CSP Antibody - Product Information**

|                   |                           |
|-------------------|---------------------------|
| Application       | WB, IP                    |
| Primary Accession | <a href="#">O9H3Z4</a>    |
| Other Accession   | <a href="#">P60904</a>    |
| Reactivity        | Human, Mouse, Rat, Monkey |
| Host              | Rabbit                    |
| Clonality         | Polyclonal                |
| Calculated MW     | 22149                     |

**Anti-CSP Antibody - Additional Information****Gene ID** 80331**Other Names**

CSP; DnaJ homolog subfamily C member 5; Cysteine string protein; CSP

**Target/Specificity**

Recognizes endogenous levels of CSP protein.

**Dilution**

WB~~WB (1/500 - 1/1000), IP (1/10 - 1/100)

IP~~N/A

**Format**

Liquid in 0.42% Potassium phosphate, 0.87% Sodium chloride, pH 7.3, 30% glycerol, and 0.09% (W/V) sodium azide.

**Storage**

Store at -20 °C. Stable for 12 months from date of receipt

**Anti-CSP Antibody - Protein Information****Name** DNAJC5 ([HGNC:16235](#))**Function**

Acts as a general chaperone in regulated exocytosis (By similarity). Acts as a co-chaperone for the SNARE protein SNAP-25 (By similarity). Involved in the calcium-mediated control of a late stage of exocytosis (By similarity). May have an important role in presynaptic function. May be involved in calcium-dependent neurotransmitter release at nerve endings (By similarity).

**Cellular Location**

Cytoplasm, cytosol {ECO:0000250|UniProtKB:Q29455}. Membrane {ECO:0000250|UniProtKB:Q29455}; Lipid-anchor {ECO:0000250|UniProtKB:Q29455}. Cytoplasmic

vesicle, secretory vesicle, chromaffin granule membrane {ECO:0000250|UniProtKB:Q29455}. Melanosome. Cell membrane. Note=The association with membranes is regulated by palmitoylation (By similarity). Identified by mass spectrometry in melanosome fractions from stage I to stage IV (PubMed:17081065). {ECO:0000250|UniProtKB:Q29455, ECO:0000269|PubMed:17081065}

#### **Tissue Location**

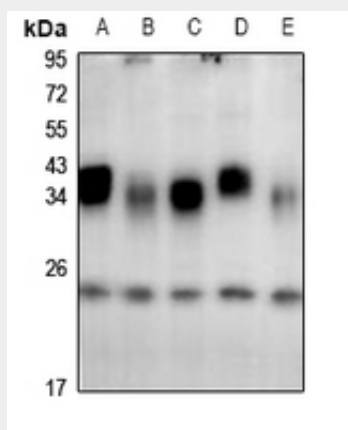
Expressed in pancreas, kidney, skeletal muscle, liver, lung, placenta, brain and heart.

#### **Anti-CSP Antibody - Protocols**

Provided below are standard protocols that you may find useful for product applications.

- [Western Blot](#)
- [Blocking Peptides](#)
- [Dot Blot](#)
- [Immunohistochemistry](#)
- [Immunofluorescence](#)
- [Immunoprecipitation](#)
- [Flow Cytometry](#)
- [Cell Culture](#)

#### **Anti-CSP Antibody - Images**



Western blot analysis of CSP expression in AML12 (A), PMVEC (B), A549 (C), LO2 (D), H1792 (E) whole cell lysates.

#### **Anti-CSP Antibody - Background**

KLH-conjugated synthetic peptide encompassing a sequence within the C-term region of human CSP. The exact sequence is proprietary.